

Low Impact Development Gulf Coast : Virtual Lesson

OBJECTIVE— This project will lead you through a process to:

- **UNDERSTAND** the environmental benefits of *Low Impact Development (LID) and Green Infrastructure (GI)*;
- **EXPLORE** examples of how LID & GI work to manage stormwater in real life;
- **CREATE** (and VIDEO) a simple model to demonstrate how Low Impact Development works.



Your Name:
 Your Teacher's Name:
 Your School:
 Your Grade:

1 UNDERSTAND

To get started, you'll need to do a little background work. Click on and read the 7-page tutorial below.



7 Page Tutorial [CLICK ON IMAGE](#)

AUDIO VERSION (20min)

You'll learn:

- Why stormwater is important
- The difference between conventional stormwater management and Low Impact Development or Green Infrastructure.
- The principles of Low Impact Development
 - **SLOW**
 - **SPREAD (disburse)**
 - **FILTER**
 - **SOAK (infiltrate)**

FOR QUESTIONS CONTACT:
Tracy Wyman, Landscape Architect
 Mississippi State University
 Gulf Coast Community Design Studio
PH: 228-436-4661
EM: twyman@gccds.msstate.edu

2 EXPLORE REAL LIFE EXAMPLES

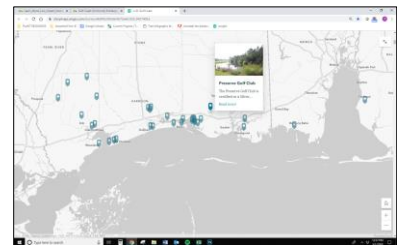
PART A. Click on the image below to watch a VIDEO demonstrating the 4 main principles of Low Impact Development:

- **SLOW**
- **SPREAD (Disburse)**
- **FILTER**
- **SOAK (Infiltrate)**



Demonstration Models Video_ 6 min

PART B. View REAL-LIFE projects by clicking on the map below:



LID Gulf Coast Story Map [CLICK ON IMAGE](#)

Pick 3 of the REAL-LIFE projects that interest you, and report on them in this format:

- Name of project
 - LID/GI Tools Used in the Project
- Explain how the LID Principles (*slow, spread, filter, or infiltrate*) are used to manage stormwater in this project.

CLICK ON IMAGE

3 CREATE

PART A. Now, it's your turn! Create a simple 'model' from items you find around your house to explain ONE (or more) of the principles of Low Impact Development.

PICK ONE: *slow, spread, filter, soak*

IDEAS OF THINGS AROUND THE HOUSE:



PART B. Make a short VIDEO demonstrating your model (preferably to a member of your household) ... or take a few snapshots to show what you've learned.

Video Must include the following:

- A demonstration of your model, and you telling which LID principle(s) your model demonstrates (Slow, spread, filter, soak).
- Which of the REAL-LIFE from project(s) that you explored in Part 2B influenced your model and how.
- A PICTURE of your REAL-LIFE Report you completed in Part 2B of this assignment.

4 ENTER TO WIN BY MAY 22

SHARE YOUR VIDEO on Instagram or Facebook and use the hashtag: #GulfCoastLID

NOTE: All entries with this hashtag will be reviewed by our Selection Committee. With parental approval they may be used on our professional social media accounts.

If you've completed ANY PART of this assignment, WAY TO GO!

All students who complete the entire assignment will be eligible to win. 😊

3 winners will receive a \$25 VISA Gift Card, and be selected based on:

- Completing the assignment
- How well your model demonstrates Low Impact Development principles

WINNERS will be contacted via the social media platform in which they entered and will be announced on May 25 on the LID:Gulf Coast Face Book page.

